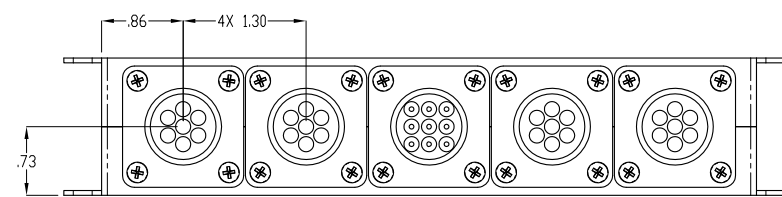
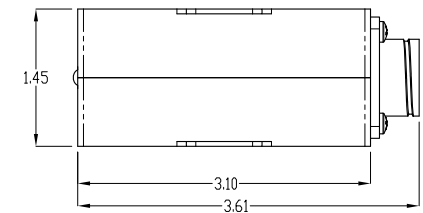
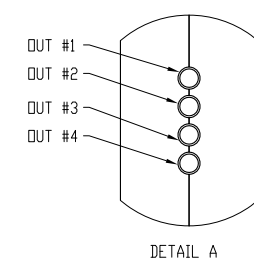
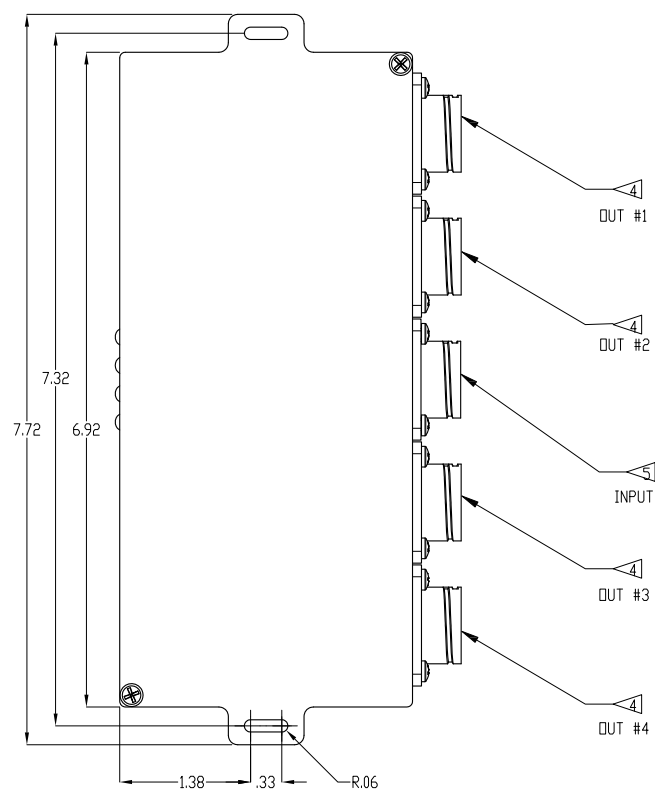
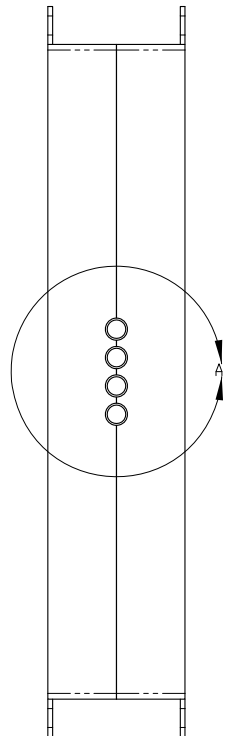


- NOTES:
1. REFERENCE MCC-19-193 FOR OPERATION INFORMATION. THIS MODULE PROVIDES REMOTE TURN ON CAPABILITIES.
  2. P/N OF AMP.
  3. CONNECTION TO OUTLET.
  4. CONNECTION TO INVERTER.
  5. AC CURRENT RATED TO: 15 AMPS MAX.
  6. 106282-1-5 AMPS FOR 110VAC PER OUTLET, 3 AMPS FOR 220VAC PER OUTLET.  
106282-2-3 AMPS FOR 110VAC PER OUTLET, 0.45 AMPS FOR 220VAC PER OUTLET.  
106282-3 NO CURRENT DETECTION CAPABILITIES. OUTPUT MUST BE EXTERNALLY LIMITED, 5 AMPS MAXIMUM.  
106282-4-2 AMPS FOR 110VAC PER OUTLET, 1 AMP FOR 220VAC PER OUTLET.
  7. MATING CONNECTOR KIT AVAILABLE AS MCC P/N: 856022-1 FOR OUTLET CONNECTORS.  
85602-1 FOR INVERTER CONNECTOR.
  8. Y ADAPTER KIT FOR INSTALLATION OF 2 UNITS AVAILABLE AS MCC P/N 806735-1.

REVISIONS			
REV.	DESCRIPTION	DATE	DRAWN
C	COMPLETE REDESIGN, REDRAWN WITH CHANGES	3/13/2008	JEH
D	ADDED -2 AND -3	11/7/2008	CAS
E	ADDED -4	10/28/2009	CAS
F	OUTPUTS WERE MISLABELED AS 'INPUTS'.	04/21/2011	CAS
G	WAS '856007-1' MATING CONNECTOR.	04/06/2012	CAS



- ① AC POWER CONTROLLER
- ② AC POWER CONTROLLER
- ③ AC POWER CONTROLLER
- ④ AC POWER CONTROLLER

THIS DRAWING CONTAINS PROPRIETARY INFORMATION AND TECHNICAL MATERIAL THAT ARE THE SOLE PROPERTY OF MID CONTINENT CONTROLS, INC. THIS DRAWING SHALL BE KEPT AS CONFIDENTIAL. IF YOU RECEIVE AND SHOULD NOT BE SHOWN OR RELEASED TO ANY ORGANIZATION OR PERSON WITHOUT FIRST OBTAINING WRITTEN PERMISSION FROM MID CONTINENT CONTROLS, INC.

MID CONTINENT CONTROLS, INC.  
 (316)789-0088 901 NORTH RIVER, DERBY, KS 67037

FINISH: NA  
 MATERIAL: NA

UNLESS OTHERWISE SPECIFIED DIMENSIONS ARE IN INCHES. TOLERANCES ARE:  
 DECIMALS ± .01 ANGLES ± 1°

TITLE: POWER CONTROLLER - AC 110/220 (ONE IN - FOUR OUT)

SCALE: 1:1 UNLESS NOTED  
 DATE: 11/05/2007

SIZE: C DRAWN: JEH DWG NO: 106282 REV: G  
 SHEET: 1 OF 1

WIRE FRONT - TO INVERTER	
CONNECTOR DESCRIPTION	MATING CONNECTOR
P/N: 794375-1 CONNECTOR	P/N: 856022-1 CONNECTOR
1. CIRCULAR TRACK ORIENTATION GROUND LINE IN LINE OUT #1 & 2 LINE OUT #3 & 4 LINE OUT #5 LINE OUT #6 LINE OUT #7 LINE OUT #8 LINE OUT #9 LINE OUT #10	
WIRE FRONT - TO OUTLET #1	
CONNECTOR DESCRIPTION	MATING CONNECTOR
P/N: 794375-1 CONNECTOR	P/N: 856022-1 CONNECTOR
1. CIRCULAR TRACK ORIENTATION GROUND LINE IN LINE OUT #1 LINE OUT #2 LINE OUT #3 LINE OUT #4	
WIRE FRONT - TO OUTLET #2	
CONNECTOR DESCRIPTION	MATING CONNECTOR
P/N: 794375-1 CONNECTOR	P/N: 856022-1 CONNECTOR
1. CIRCULAR TRACK ORIENTATION GROUND LINE IN LINE OUT #1 LINE OUT #2 LINE OUT #3 LINE OUT #4	